



**THE SCHOOL BOARD OF BROWARD COUNTY, FLORIDA**  
**PROPOSED**  
**2016-2017 ORGANIZATIONAL CHART**

**THE SCHOOL BOARD OF BROWARD COUNTY, FLORIDA**  
**PROPOSED**  
**2016-2017 ORGANIZATIONAL CHART**

**School Board Appointed Committees & Public Stakeholders.....1**

**Superintendent of Schools/General Counsel.....2**

**Chief School Performance & Accountability Officer.....3**

**Chief Academic Officer.....4-7**

**Early Learning & Language Acquisition.....4**

**Exceptional Student Education & Support.....5**

**Instruction & Interventions.....6**

**Student Support Initiatives.....7**

**Chief Auditor.....8**

**Chief Facilities Officer.....9**

**Chief Financial Officer.....10**

**Chief Human Resources & Equity Officer.....11**

**Chief Information Officer.....12**

**Chief Portfolio Services Officer.....13**

**Chief Public Information Officer.....14**

**Chief of Staff.....15**

**Chief Strategy & Operations Officer.....16-17**

**Broward Education Foundation, Business Support Center, Grants Administration, Strategic Management & Evaluation.....16**

**Food & Nutrition Services, Procurement & Warehousing Services, Student Transportation & Fleet Services.....17**

**SCHOOL BOARD APPOINTED COMMITTEES & PUBLIC STAKEHOLDERS**

**2016-2017 ORGANIZATIONAL CHART  
PROPOSED**

**Legend**

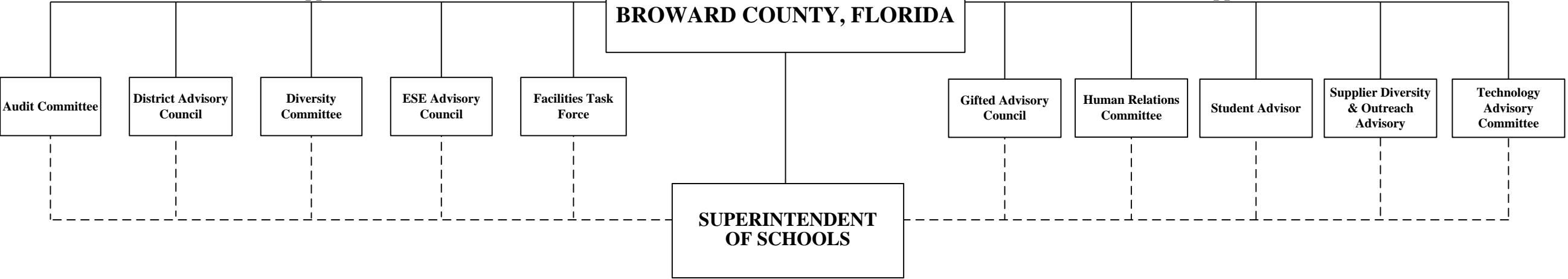
Funding from sources other than General Funds	New Position Job Description Exists <b>N</b>	Reporting Change from Different Division <b>R</b>
New Position Job Description Does Not Exist <b>N</b> ✓	Job Study on Existing Position <b>J</b>	Alignment Change within same Division <b>A</b>
Revision to Existing Job Description/Title Change ✓	Funding: <b>C</b> Capital <b>FS</b> Food Service <u>Direct Report</u> <b>G</b> General <b>Gr</b> Grant <u>Indirect Report</u>	

**BROWARD COUNTY  
COMMUNITY**

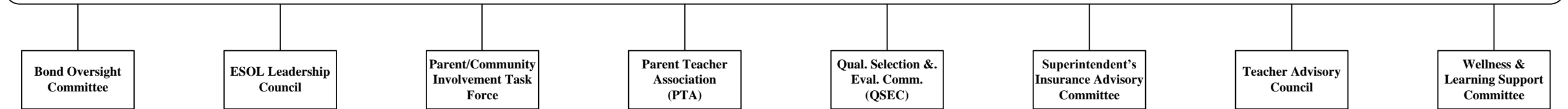
**THE SCHOOL BOARD OF  
BROWARD COUNTY, FLORIDA**

**School Board Appointed Committees**

**School Board Appointed Committees**



**PUBLIC STAKEHOLDERS**



**SUPERINTENDENT/GENERAL COUNSEL**

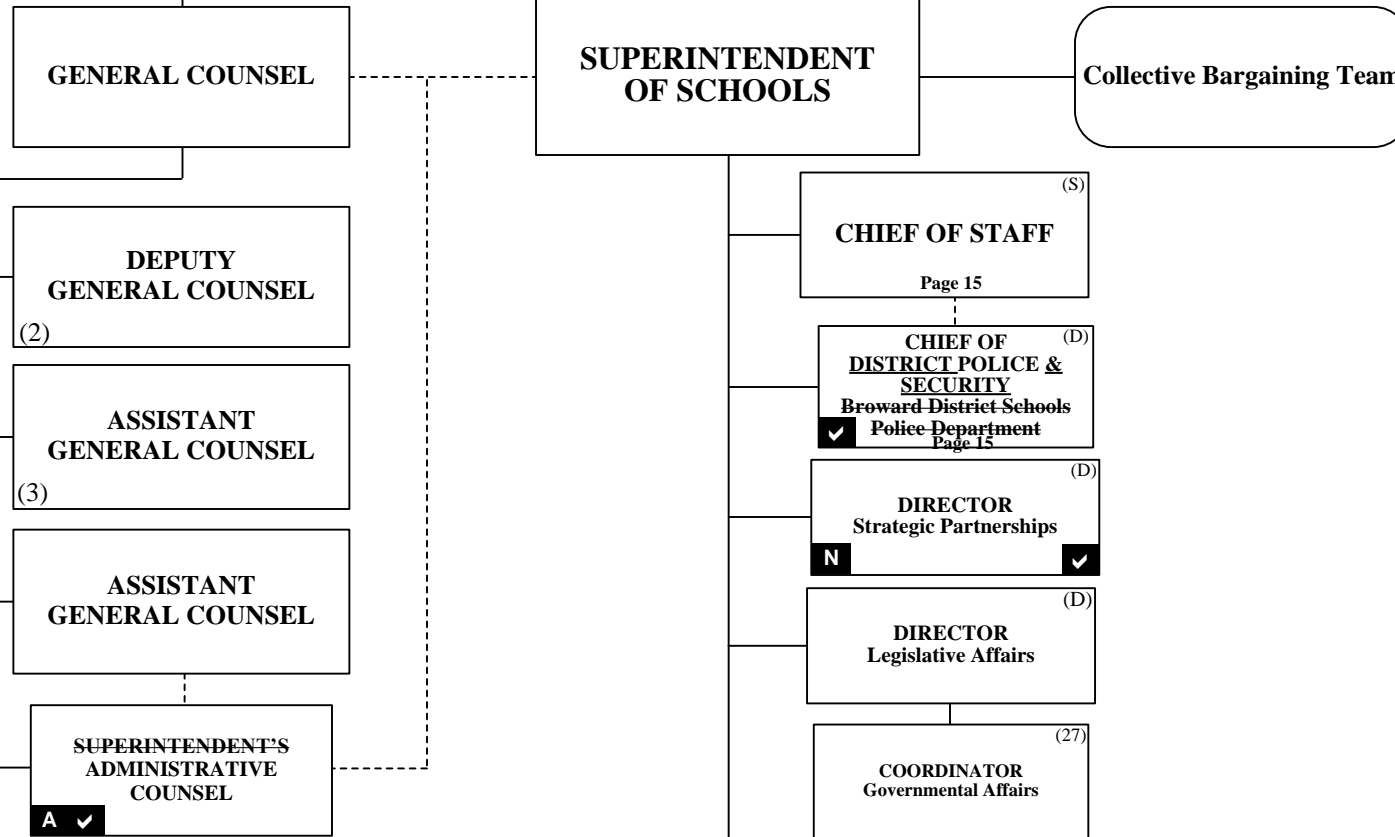
**2016-2017 ORGANIZATIONAL CHART  
PROPOSED**

**Legend**

Funding from sources other than General Funds	New Position Job Description Exists <b>N</b>	Reporting Change from Different Division <b>R</b>
New Position Job Description Does Not Exist <b>N</b> ✓	Job Study on Existing Position <b>J</b>	Alignment Change within same Division <b>A</b>
Revision to Existing Job Description/Title Change ✓	Funding: <b>C</b> Capital <b>FS</b> Food Service <u>Direct Report</u> <b>G</b> General <b>Gr</b> Grant <u>Indirect Report</u>	

**BROWARD COUNTY  
COMMUNITY**

**THE SCHOOL BOARD OF  
BROWARD COUNTY, FLORIDA**



- CHIEF SCHOOL PERFORMANCE & ACCOUNTABILITY OFFICER**  
Page 3
- CHIEF ACADEMIC OFFICER**  
Pages 4-7
- CHIEF AUDITOR**  
Page 8
- CHIEF FACILITIES OFFICER**  
Page 9
- CHIEF FINANCIAL OFFICER**  
Page 10
- CHIEF HUMAN RESOURCES & EQUITY OFFICER**  
Page 11
- CHIEF INFORMATION OFFICER**  
Page 12
- CHIEF PORTFOLIO SERVICES OFFICER**  
Page 13
- CHIEF PUBLIC INFORMATION OFFICER**  
Page 14
- CHIEF STRATEGY & OPERATIONS OFFICER**  
Pages 16-17
- ~~**CHIEF TALENT DEVELOPMENT OFFICER**  
Page 18~~

# SCHOOL PERFORMANCE & ACCOUNTABILITY OSPA

## 2016-2017 ORGANIZATIONAL CHART **PROPOSED**

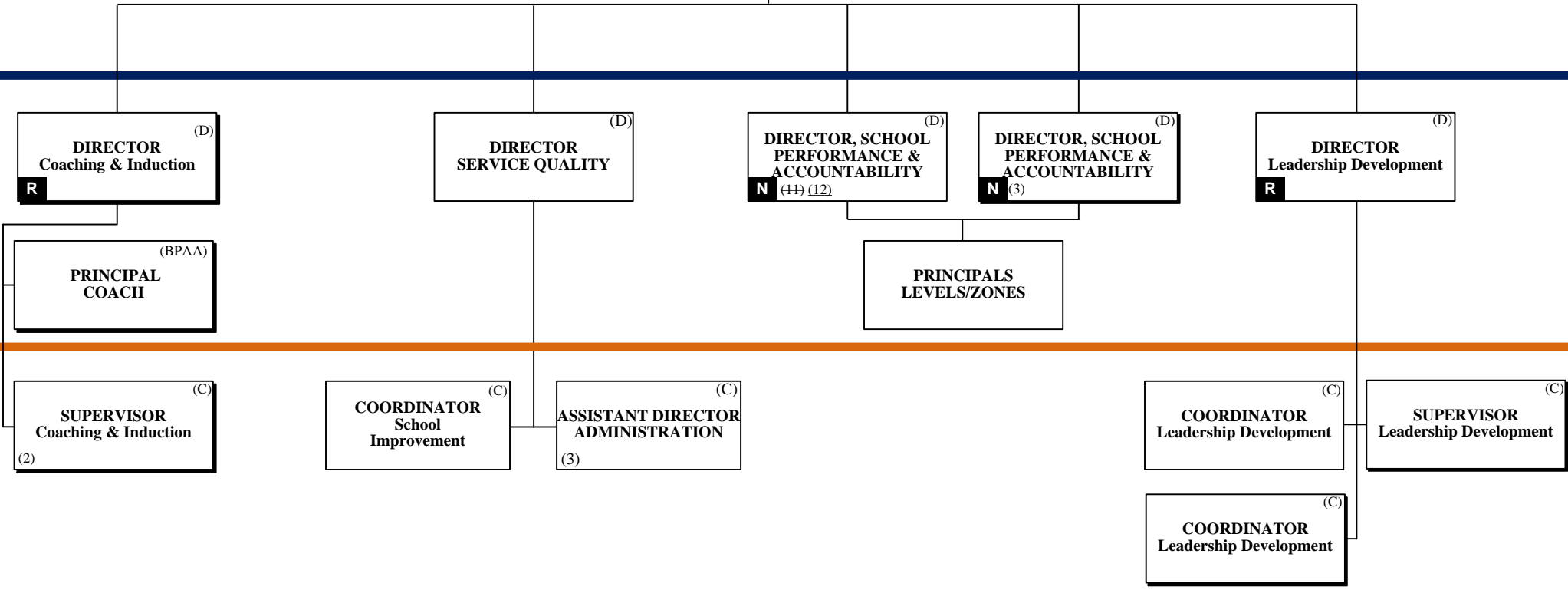
**Legend**

Funding from sources other than General Funds <b>N</b>	New Position Job Description Exists <b>N</b>	Reporting Change from Different Division <b>R</b>
New Position Job Description Does Not Exist <b>N</b> ✓	Job Study on Existing Position <b>N</b>	Alignment Change within same Division <b>A</b>
Revision to Existing Job Description/Title Change ✓	Funding: <b>C</b> Capital <b>FS</b> Food Service <u>Direct Report</u> <b>G</b> General <b>Gr</b> Grant <u>Indirect Report</u>	

THE SCHOOL BOARD OF BROWARD COUNTY, FLORIDA

SUPERINTENDENT OF SCHOOLS

CHIEF SCHOOL PERFORMANCE & ACCOUNTABILITY OFFICER (S)



PAY BANDS 'S' & 'E'

PAY BAND 'D'

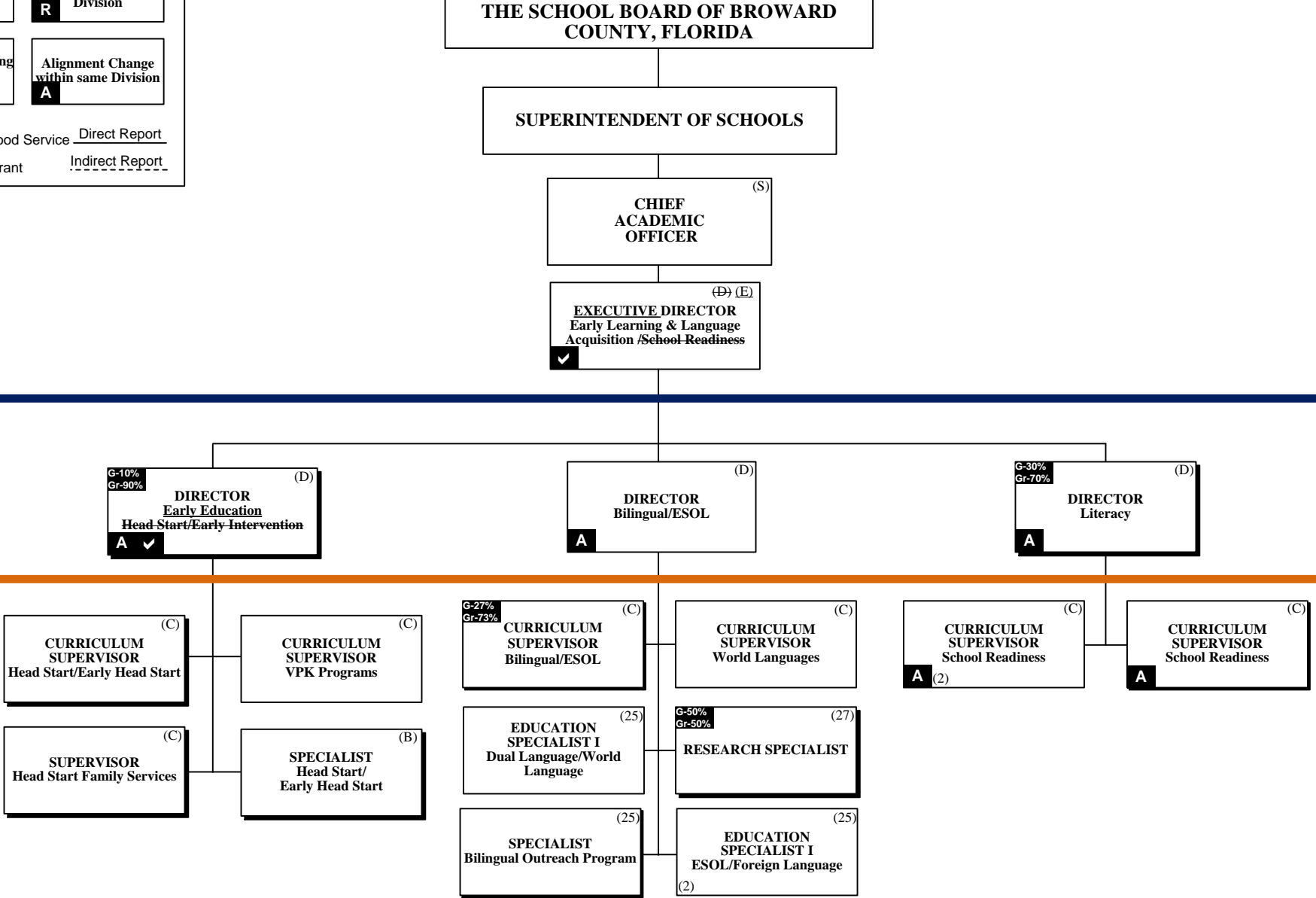
PAY BANDS 'C' & 'B'

**ACADEMICS**  
**EARLY CHILDHOOD EDUCATION**  
**EARLY LEARNING & LANGUAGE ACQUISITION**

**2016-2017 ORGANIZATIONAL CHART**  
**PROPOSED**

**Legend**

Funding from sources other than General Funds	New Position Job Description Exists <b>N</b>	Reporting Change from Different Division <b>R</b>
New Position Job Description Does Not Exist <b>N</b> ✓	Job Study on Existing Position <b>J</b>	Alignment Change within same Division <b>A</b>
Revision to Existing Job Description/Title Change ✓	Funding: <b>C</b> Capital <b>FS</b> Food Service <u>Direct Report</u> <b>G</b> General <b>Gr</b> Grant <u>Indirect Report</u>	



PAY BANDS 'S' & 'E'

PAY BAND 'D'

PAY BANDS 'C' & 'B'

# ACADEMICS EXCEPTIONAL STUDENT EDUCATION & SUPPORT

**2016-2017 ORGANIZATIONAL CHART  
PROPOSED**

<b>Funding from sources other than General Funds</b>	<b>New Position Job Description Exists</b> N	<b>Reporting Change from Different Division</b> R
<b>New Position Job Description Does Not Exist</b> N ✓	<b>Job Study on Existing Position</b> ✍	<b>Alignment Change within same Division</b> A
<b>Revision to Existing Job Description/Title Change</b> ✓	<b>Funding:</b> <b>C</b> Capital <b>FS</b> Food Service <u>Direct Report</u> <b>G</b> General <b>Gr</b> Grant <u>Indirect Report</u>	

**THE SCHOOL BOARD OF BROWARD COUNTY, FLORIDA**

**SUPERINTENDENT OF SCHOOLS**

**CHIEF ACADEMIC OFFICER** (S)

**EXECUTIVE DIRECTOR** (E)  
Exceptional Student Education & Support

PAY BANDS 'S' & 'E'

**DIRECTOR** (D)  
Exceptional Student Education

**DIRECTOR** (D)  
Support Services

PAY BAND 'D'

**CURRICULUM SUPERVISOR** (C)  
Specific Learning Disabilities

**CURRICULUM SUPERVISOR** (C)  
Autism Spectrum Disorder

**COORDINATOR** (C)  
Due Process

**COORDINATOR** (C)  
Due Process

**CURRICULUM SUPERVISOR** (C)  
Intellectual Disabilities

**CURRICULUM SUPERVISOR** (C)  
Emotional/Behavioral Disabilities

**DISTRICT COORDINATOR** (C)  
Student Services (3)

**COORDINATOR** (27)  
Medicaid

**SUPERVISOR** (C)  
ESE Transition Services

**CURRICULUM SUPERVISOR** (C)  
DHH/Visually Impaired

**CURRICULUM SUPERVISOR** (C)  
Speech-Language Physically Impaired

**CURRICULUM SUPERVISOR** (C)  
Severely Emotionally Disturbed Network

**CURRICULUM SUPERVISOR** (C)  
Preschool ESE

**DISTRICT SUPERVISOR** (C)  
Exceptional Student Education

**SUPERVISOR** (C)  
FL Diagnostic & Learning Resource System

**MANAGER** (26)  
SSS/ESE Electronic Management System EZ IEP

PAY BANDS 'C' & 'B'

# ACADEMICS INSTRUCTION & INTERVENTIONS

**2016-2017 ORGANIZATIONAL CHART  
PROPOSED**

THE SCHOOL BOARD OF BROWARD  
COUNTY, FLORIDA

SUPERINTENDENT OF SCHOOLS

CHIEF  
ACADEMIC  
OFFICER <sup>(S)</sup>

**Legend**

Funding from sources other than General Funds	New Position Job Description Exists <b>N</b>	Reporting Change from Different Division <b>R</b>
New Position Job Description Does Not Exist <b>N</b> ✓	Job Study on Existing Position <b>A</b>	Alignment Change within same Division <b>A</b>
Revision to Existing Job Description/Title Change ✓	Funding: <b>C</b> Capital <b>FS</b> Food Service <u>Direct Report</u> <b>G</b> General <b>Gr</b> Grant <u>Indirect Report</u>	

~~DIRECTOR  
Strategic Achievement <sup>(S)</sup>~~

~~EXECUTIVE DIRECTOR  
Instruction & Interventions <sup>(S)</sup>~~

PAY BANDS 'S' & 'E'

DIRECTOR <sup>(D)</sup>  
Student Assessment  
& Research **R**

DIRECTOR <sup>(D)</sup>  
Professional Development  
Standards & Support **R**

DIRECTOR <sup>(D)</sup>  
Teacher Professional  
Learning & Growth **R**

DIRECTOR <sup>(D)</sup>  
Elementary Learning **N** ✓

DIRECTOR <sup>(D)</sup>  
Math, Science & Gifted  
Secondary Learning **A** ✓

DIRECTOR <sup>(D)</sup>  
Innovative Learning & Arts **A** ✓

DIRECTOR <sup>(S)(D)</sup>  
Applied Learning  
CURRICULUM  
SUPERVISOR  
Educational Programs **A** ✓

DIRECTOR <sup>(D)</sup>  
Career, Technical, Adult,  
Community Education

PAY BAND 'D'

RESEARCH SPECIALIST <sup>(27)</sup>

RESEARCH SPECIALIST <sup>(27)</sup>

SUPERVISOR <sup>(C)</sup>  
Professional Development  
Standards & Support **C-77%  
Gr-23%**

SUPERVISOR <sup>(C)</sup>  
Teacher Professional Learning  
& Growth <sup>(2)</sup>

CURRICULUM  
SUPERVISOR <sup>(C)</sup>  
Literacy  
Language Arts **A** ✓ <sup>(2)</sup>

CURRICULUM  
SUPERVISOR <sup>(C)</sup>  
Literacy  
Language Arts **A** ✓ <sup>(2)</sup>

CURRICULUM  
SUPERVISOR <sup>(C)</sup>  
Library Media

CURRICULUM  
SUPERVISOR <sup>(C)</sup>  
Educational Leadership

CURRICULUM  
SUPERVISOR <sup>(C)</sup>  
Technical Education/  
Agriculture

RESEARCH SPECIALIST <sup>(27)</sup>  
<sup>(2)</sup>

PROCESS ANALYST <sup>(25)</sup>  
Professional Development

SUPERVISOR <sup>(C)</sup>  
Professional Development  
Standards & Support

COORDINATOR <sup>(27)</sup>  
Teacher Support

CURRICULUM  
SUPERVISOR <sup>(C)</sup>  
Math **A** <sup>(2)</sup>

CURRICULUM  
SUPERVISOR <sup>(C)</sup>  
Math <sup>(2)</sup>

CURRICULUM  
SUPERVISOR <sup>(C)</sup>  
Gifted & Talented **A**

CURRICULUM  
SUPERVISOR <sup>(C)</sup>  
Family & Consumer Science

CURRICULUM  
SUPERVISOR <sup>(C)</sup>  
Business Technology

SPECIALIST <sup>(25)</sup>  
Testing <sup>(2)</sup>

CURRICULUM  
SUPERVISOR <sup>(C)</sup>  
Science **A**

CURRICULUM  
SUPERVISOR <sup>(C)</sup>  
Science

PROJECT  
MANAGER <sup>(27)</sup>  
Technology & Instruction

CURRICULUM  
SUPERVISOR <sup>(C)</sup>  
Vocational Education  
Industrial

CURRICULUM  
SUPERVISOR <sup>(C)</sup>  
Health Science

CURRICULUM  
SUPERVISOR <sup>(C)</sup>  
Social Studies **A**

CURRICULUM  
SUPERVISOR <sup>(C)</sup>  
Social Studies **A**

TRAINING  
ANALYST <sup>(25)</sup>

CURRICULUM  
SUPERVISOR <sup>(C)</sup>  
Music & Performing, Fine  
Arts, Elementary Learning **A** ✓

CURRICULUM  
SUPERVISOR <sup>(C)</sup>  
Fine Arts, Secondary  
Learning **A** ✓

CURRICULUM  
SUPERVISOR <sup>(C)</sup>  
Physical Education &  
Educational Programs **A**

PAY BANDS 'C' & 'B'



**Legend**

Funding from sources other than General Funds <b>N</b>	New Position Job Description Exists <b>N</b>	Reporting Change from Different Division <b>R</b>
New Position Job Description Does Not Exist <b>N</b>	Job Study on Existing Position <b>A</b>	Alignment Change within same Division <b>A</b>
Revision to Existing Job Description/Title Change <b>A</b>	Funding: <b>C</b> Capital <b>FS</b> Food Service <u>Direct Report</u> <b>G</b> General <b>Gr</b> Grant <u>Indirect Report</u>	

**ACADEMICS  
STUDENT SUPPORT INITIATIVES**

**2016-2017 ORGANIZATIONAL CHART  
PROPOSED**

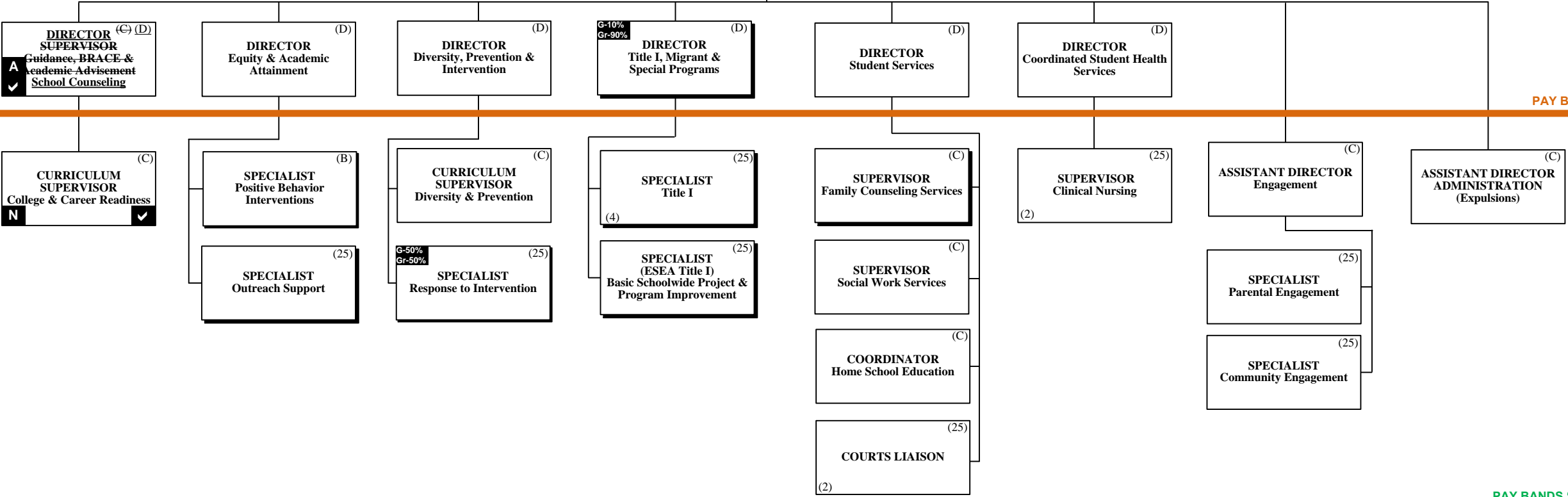
THE SCHOOL BOARD OF  
BROWARD COUNTY, FLORIDA

SUPERINTENDENT OF SCHOOLS

CHIEF  
ACADEMIC  
OFFICER (S)

EXECUTIVE DIRECTOR  
Student Support Initiatives (E)

PAY BANDS 'S' & 'E'



PAY BAND 'D'

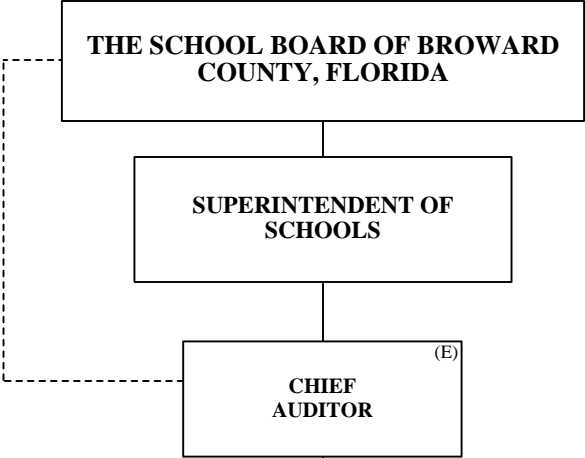
PAY BANDS 'C' & 'B'

**Legend**

Funding from sources other than General Funds	New Position Job Description Exists <b>N</b>	Reporting Change from Different Division <b>R</b>
New Position Job Description Does Not Exist <b>N</b> ✓	Job Study on Existing Position <b>J</b>	Alignment Change within same Division <b>A</b>
Revision to Existing Job Description/Title Change ✓	<b>Funding:</b> <b>C</b> Capital <b>FS</b> Food Service <u>Direct Report</u> <b>G</b> General <b>Gr</b> Grant <u>Indirect Report</u>	

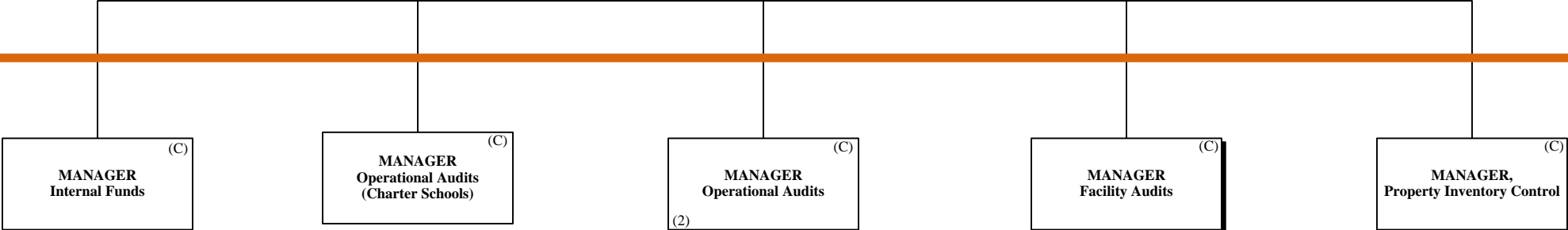
**2016-2017 ORGANIZATIONAL CHART  
PROPOSED**

**AUDITOR**



PAY BANDS 'S' & 'E'

PAY BAND 'D'



PAY BANDS 'C' & 'B'

# FACILITIES

## 2016-2017 ORGANIZATIONAL CHART PROPOSED

**Legend**

Funding from sources other than General Funds	New Position Job Description Exists <b>N</b>	Reporting Change from Different Division <b>R</b>
New Position Job Description Does Not Exist <b>N</b>	Job Study on Existing Position <b>A</b>	Alignment Change within same Division <b>A</b>
Revision to Existing Job Description/Title Change <b>✓</b>	Funding: <b>C</b> Capital <b>FS</b> Food Service <u>Direct Report</u> <b>G</b> General <b>Gr</b> Grant <u>Indirect Report</u>	

THE SCHOOL BOARD OF BROWARD COUNTY, FLORIDA

SUPERINTENDENT OF SCHOOLS

CHIEF FACILITIES OFFICER (S)

EXECUTIVE DIRECTOR Capital Programs (E)

PAY BANDS 'S' & 'E'

DIRECTOR Pre-Construction (D)

DIRECTOR Construction (D)

DIRECTOR Program Controls (D)

CHIEF FIRE OFFICIAL (D)

DIRECTOR Business Process Improvement (D) **N** **✓**

DIRECTOR Physical Plant Operations (D) **C-70%** **G-30%**

DIRECTOR Environmental Health & Safety (D)

PAY BAND 'D'

MANAGER Mechanical Engineering (C)

MANAGER Construction SMART Projects (C) **✓** (2)

MANAGER Construction Small Capital Projects (C) **N**

MANAGER Contract Administration (27)

PLANS EXAMINER/INSPECTOR Fire (25) (3)

COORDINATOR Performance Improvement (B) **A**

MANAGER Facilities Support Services (C)

AREA MANAGER Trades Zone 1 (C)

MANAGER PPO Finance (C) **N** **✓**

MANAGER Environmental Conservation/Utility Management (27)

COORDINATOR Local Education Agency (LEA) (C)

MANAGER Architectural Engineering (C)

MANAGER Commissioning (C)

PROJECT MANAGER III Zone 1 (27) **A**

MANAGER Database Administration (27)

SUPERVISOR Work Flow/Labor Utilization (25) **C-55%** **G-45%**

SUPERVISOR Planning & Scheduling (25) **C-55%** **G-45%**

AREA MANAGER Trades Zone 2 (C) **C-70%** **G-30%**

MANAGER Custodial/Grounds (C) **C-55%** **G-45%**

SPECIALIST IV Building Control (25)

PROJECT MANAGER Occupational Health/Environmental Control (25)

MANAGER Electrical Engineering (C)

PROJECT MANAGER III Zone 2 (27)

PROJECT MANAGER III Zone 3 (27)

MANAGER Health & Safety (B)

PROJECT MANAGER III (27)

AREA MANAGER Trades Zone 3 (C) **C-70%** **G-30%**

MANAGER Grounds (26) **C-55%** **G-45%**

COORDINATOR Health & Safety (B)

PROJECT MANAGER I (25)

MANAGER ADA Accessibility (C)

SPECIALIST ADA Accessibility (25)

PROJECT MANAGER III (27)

SPECIALIST Safety Training (25)

PROJECT MANAGER III (27)

AREA MANAGER Trades District (C) **C-70%** **G-30%**

TRADE SUPERVISOR (25) (9)

SPECIALIST Safety Training (25)

PROJECT MANAGER I (25)

ESMAB PAY BANDS 'C' & 'B'  
TSP PAY GRADES 25-28

# FINANCIAL MANAGEMENT

## 2016-2017 ORGANIZATIONAL CHART PROPOSED

THE SCHOOL BOARD OF BROWARD COUNTY, FLORIDA

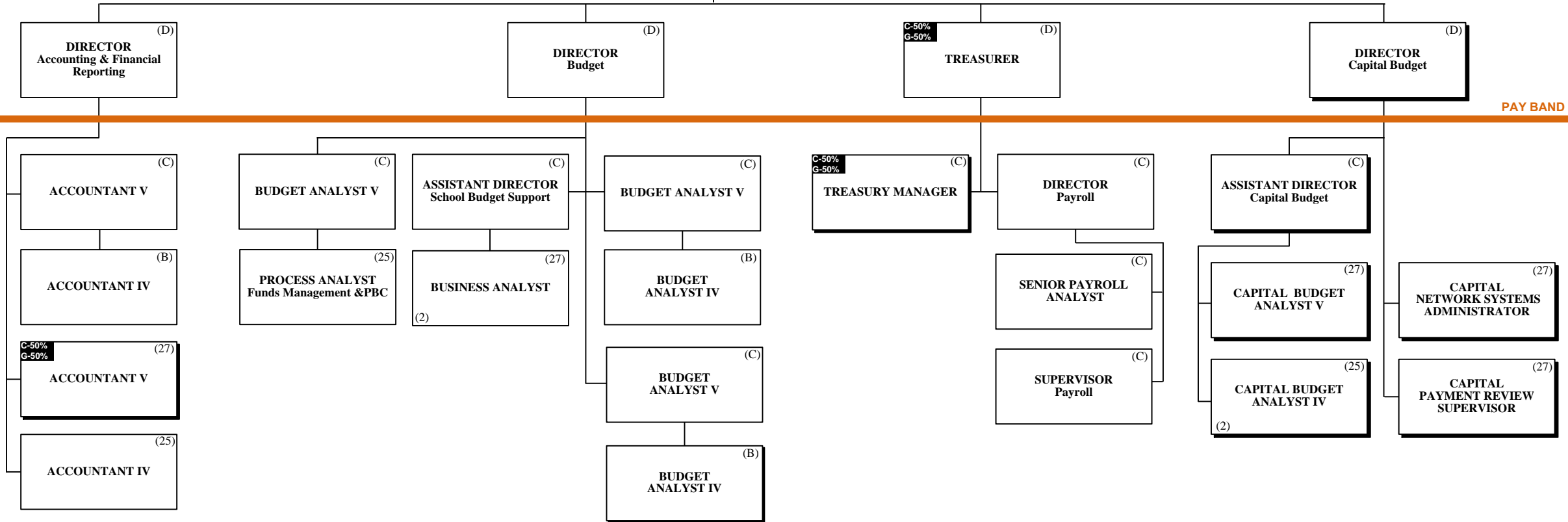
SUPERINTENDENT OF SCHOOLS

**CHIEF FINANCIAL OFFICER (CFO)**  
C-20%  
G-80% (S)

**Legend**

Funding from sources other than General Funds	New Position Job Description Exists <b>N</b>	Reporting Change from Different Division <b>R</b>
New Position Job Description Does Not Exist <b>N</b>	Job Study on Existing Position <b>J</b>	Alignment Change within same Division <b>A</b>
Revision to Existing Job Description/Title Change <b>✓</b>	Funding: <b>C</b> Capital <b>FS</b> Food Service <u>Direct Report</u> <b>G</b> General <b>Gr</b> Grant <u>Indirect Report</u>	

PAY BANDS 'S' & 'E'



PAY BAND 'D'

ESMAB PAY BANDS 'C' & 'B'  
TSP PAY GRADES 25-28

# HUMAN RESOURCES & EQUITY

THE SCHOOL BOARD OF BROWARD COUNTY, FLORIDA

## 2016-2017 ORGANIZATIONAL CHART PROPOSED

**Legend**

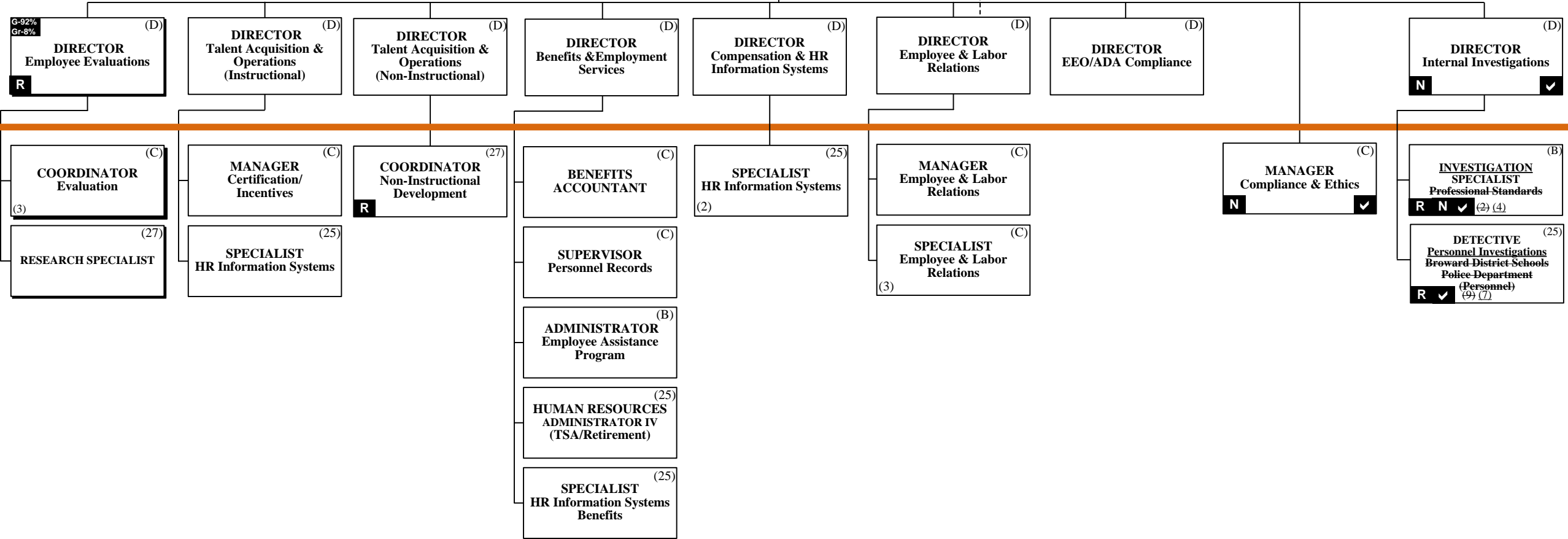
Funding from sources other than General Funds <b>N</b>	New Position Job Description Exists <b>N</b>	Reporting Change from Different Division <b>R</b>
New Position Job Description Does Not Exist <b>N</b>	Job Study on Existing Position <b>A</b>	Alignment Change within same Division <b>A</b>
Revision to Existing Job Description/Title Change <b>✓</b>	Funding: <b>C</b> Capital <b>FS</b> Food Service <u>Direct Report</u> <b>G</b> General <b>Gr</b> Grant <u>Indirect Report</u>	

SUPERINTENDENT OF SCHOOLS

CHIEF HUMAN RESOURCES & EQUITY OFFICER (S)

Collective Bargaining

PAY BANDS 'S' & 'E'



ESMAB PAY BANDS 'C' & 'B'  
TSP/PBA PAY GRADES 25-28

**Legend**

Funding from sources other than General Funds	New Position Job Description Exists <b>N</b>	Reporting Change from Different Division <b>R</b>
New Position Job Description Does Not Exist <b>N</b> ✓	Job Study on Existing Position <b>J</b>	Alignment Change within same Division <b>A</b>
Revision to Existing Job Description/Title Change ✓	Funding: <b>C</b> Capital <b>FS</b> Food Service <u>Direct Report</u> <b>G</b> General <b>Gr</b> Grant <u>Indirect Report</u>	

# INFORMATION & TECHNOLOGY

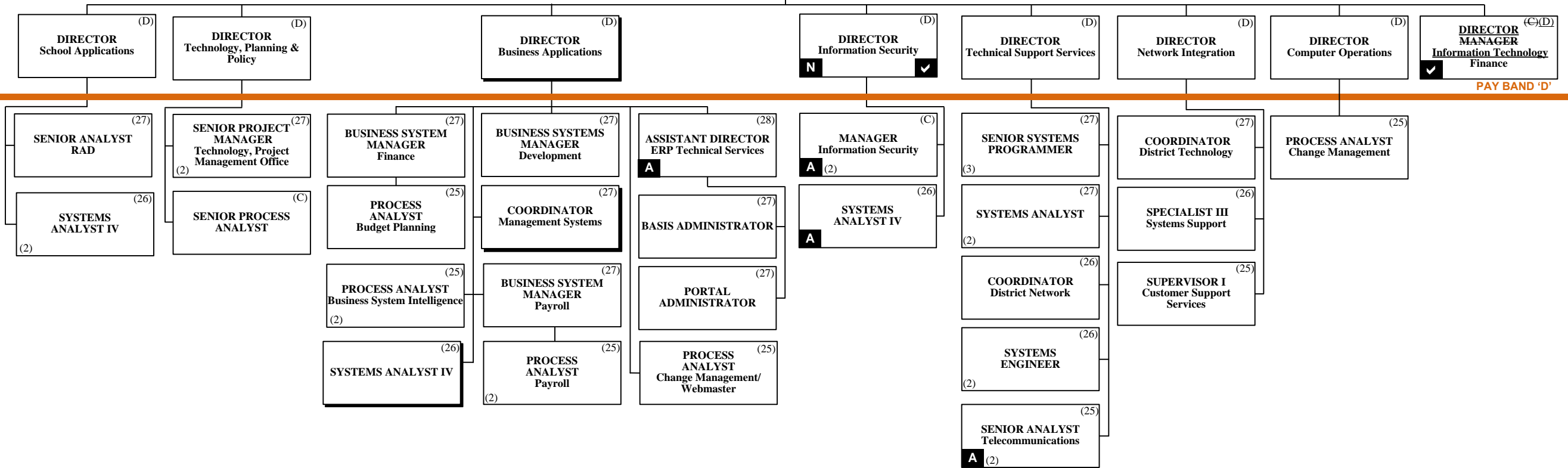
## 2016-2017 ORGANIZATIONAL CHART **PROPOSED**

THE SCHOOL BOARD OF BROWARD COUNTY, FLORIDA

SUPERINTENDENT OF SCHOOLS

CHIEF INFORMATION OFFICER (S)

PAY BANDS 'S' & 'E'



PAY BAND 'D'

ESMAB PAY BANDS 'C' & 'B'  
TSP PAY GRADES 25-28

**Legend**

Funding from sources other than General Funds <b>N</b>	New Position Job Description Exists <b>N</b>	Reporting Change from Different Division <b>R</b>
New Position Job Description Does Not Exist <b>N</b> ✓	Job Study on Existing Position <b>N</b>	Alignment Change within same Division <b>A</b>
Revision to Existing Job Description/Title Change ✓	Funding: <b>C</b> Capital <b>FS</b> Food Service <u>Direct Report</u> <b>G</b> General <b>Gr</b> Grant <u>Indirect Report</u>	

**PORTFOLIO SERVICES**

**2016-2017 ORGANIZATIONAL CHART  
PROPOSED**

THE SCHOOL BOARD OF BROWARD COUNTY, FLORIDA

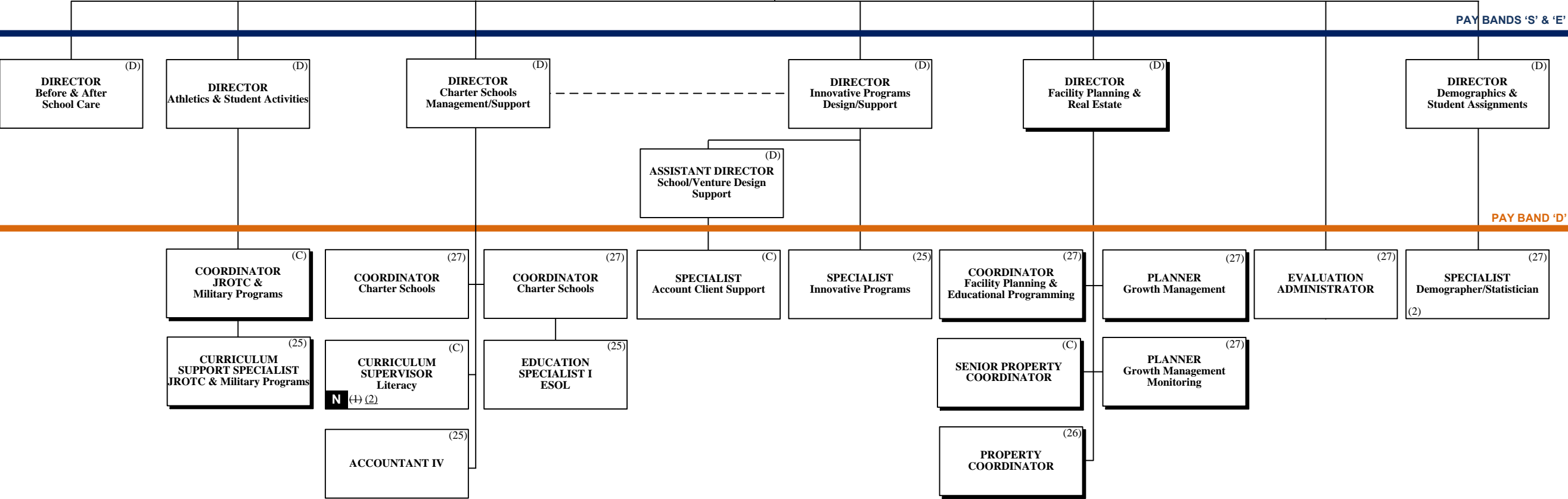
SUPERINTENDENT OF SCHOOLS

CHIEF PORTFOLIO SERVICES OFFICER (E)

PAY BANDS 'S' & 'E'

PAY BAND 'D'

ESMAB PAY BANDS 'C' & 'B'  
TSP PAY GRADES 25-28



<b>Funding from sources other than General Funds</b>	<b>New Position Job Description Exists</b> N	<b>Reporting Change from Different Division</b> R
<b>New Position Job Description Does Not Exist</b> N	<b>Job Study on Existing Position</b> ✓	<b>Alignment Change within same Division</b> A
<b>Revision to Existing Job Description/Title Change</b> ✓	<b>Funding:</b> <b>C</b> Capital <b>FS</b> Food Service <u>Direct Report</u> <b>G</b> General <b>Gr</b> Grant <u>Indirect Report</u>	

**PUBLIC INFORMATION OFFICER**

**2016-2017 ORGANIZATIONAL CHART  
PROPOSED**

THE SCHOOL BOARD OF BROWARD COUNTY, FLORIDA

SUPERINTENDENT OF SCHOOLS

CHIEF PUBLIC INFORMATION OFFICER (E)

PAY BANDS 'S' & 'E'

DIRECTOR/ GENERAL MANAGER Broward Educational Communication Network (BECON) (D)

DIRECTOR Marketing & Communications (D)

PAY BAND 'D'

BECON STATION MANAGER (28)

MANAGER II Engineering (26)

MANAGER of GRAPHICS (26)

COORDINATOR District Community Relations (27)

COORDINATOR BECON Public Relations & Fundraising (26)

MANAGER II Production (26)

SPECIALIST Public Affairs (25)  
(2)

MANAGER Integrated Marketing Communication & Social Media (B)

MANAGER II School Services (B)

CURATOR Old Dillard Museum (25)

ESMAB PAY BANDS 'C' & 'B'  
TSP PAY GRADES 25-28



# CHIEF OF STAFF

## 2016-2017 ORGANIZATIONAL CHART PROPOSED

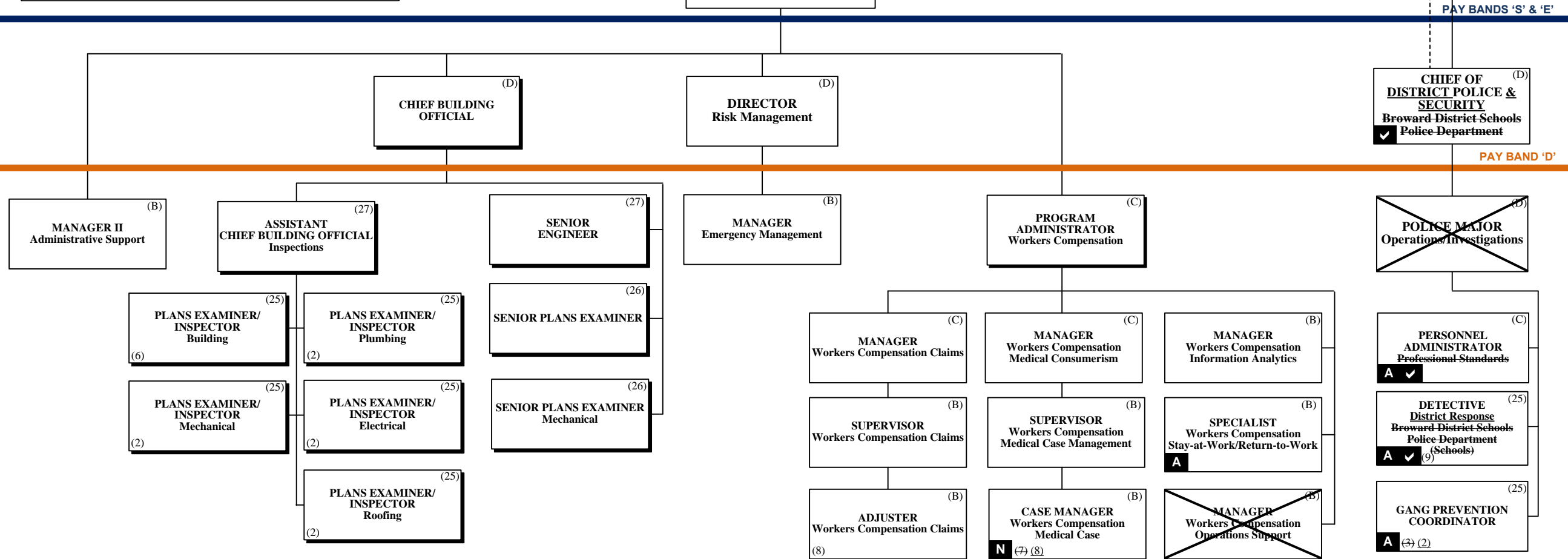
THE SCHOOL BOARD OF BROWARD COUNTY, FLORIDA

SUPERINTENDENT OF SCHOOLS

CHIEF OF STAFF (S)

**Legend**

Funding from sources other than General Funds	New Position Job Description Exists <b>N</b>	Reporting Change from Different Division <b>R</b>
New Position Job Description Does Not Exist <b>N</b>	Job Study on Existing Position <b>J</b>	Alignment Change within same Division <b>A</b>
Revision to Existing Job Description/Title Change <b>✓</b>	Funding: <b>C</b> Capital <b>FS</b> Food Service <u>Direct Report</u> <b>G</b> General <b>Gr</b> Grant <u>Indirect Report</u>	



ESMAB PAY BANDS 'C' & 'B'  
TSP PAY GRADES 25-28

**Legend**

Funding from sources other than General Funds <b>N</b>	New Position Job Description Exists <b>N</b>	Reporting Change from Different Division <b>R</b>
New Position Job Description Does Not Exist <b>N</b> ✓	Job Study on Existing Position <b>A</b>	Alignment Change within same Division <b>A</b>
Revision to Existing Job Description/Title Change ✓	Funding: <b>C</b> Capital <b>FS</b> Food Service <u>Direct Report</u> <b>G</b> General <b>Gr</b> Grant <u>Indirect Report</u>	

**STRATEGY & OPERATIONS**

**2016-2017 ORGANIZATIONAL CHART  
PROPOSED**

THE SCHOOL BOARD OF BROWARD COUNTY, FLORIDA

SUPERINTENDENT OF SCHOOLS

CHIEF STRATEGY & OPERATIONS OFFICER (S)

EXECUTIVE DIRECTOR (E)  
Strategy Implementation & Accountability  
**N** ✓

PAY BANDS 'S' & 'E'

PRESIDENT/CEO Broward Education Foundation

DIRECTOR (D)  
Business Support Center

DIRECTOR (D)  
Grants Administration

EXECUTIVE DIRECTOR (E) (D)  
Enterprise Project Management Strategy & Continuous Improvement  
**A** ✓

DIRECTOR (D)  
Performance Management  
**A**

DIRECTOR (D)  
Program Evaluation  
**N** ✓

PAY BAND 'D'

- MANAGER Budget (27)
- BUSINESS ANALYST (27)  
**N** (+) (2)
- SYSTEMS ANALYST IV (26)
- SUPERVISOR I Printing Services (26)

- SENIOR MANAGER Grant Programs (C)
- MANAGER Grant Programs Oversight (26)  
(2)
- GRANTS ADMINISTRATOR Accountability & Reporting (25)

- COORDINATOR Performance Management (C)
- ~~COORDINATOR Partnership Education (C)~~

COORDINATOR (C)  
Strategic Performance Management  
**A** ✓

EVALUATION ADMINISTRATOR (27)  
**A**

ESMAB PAY BANDS 'C' & 'B'  
TSP PAY GRADES 25-28

**Legend**

Funding from sources other than General Funds	New Position Job Description Exists <b>N</b>	Reporting Change from Different Division <b>R</b>
New Position Job Description Does Not Exist <b>N</b> ✓	Job Study on Existing Position <b>J</b>	Alignment Change within same Division <b>A</b>
Revision to Existing Job Description/Title Change ✓	Funding: <b>C</b> Capital <b>FS</b> Food Service <u>Direct Report</u> <b>G</b> General <b>Gr</b> Grant <u>Indirect Report</u>	

**STRATEGY & OPERATIONS**

**THE SCHOOL BOARD OF BROWARD COUNTY, FLORIDA**

**SUPERINTENDENT OF SCHOOLS**

**CHIEF STRATEGY & OPERATIONS OFFICER** (S)

**2016-2017 ORGANIZATIONAL CHART**  
**PROPOSED**

PAY BANDS 'S' & 'E'

**DIRECTOR** (D)  
**Food & Nutrition Services**

**DIRECTOR** (D)  
**Procurement & Warehousing Services**

**DIRECTOR** (D)  
**Student Transportation & Fleet Services**

PAY BAND 'D'

**ASSISTANT DIRECTOR** (C)  
**Food & Nutrition Services**

**SUPERVISOR** (B)  
**Resource Computer Training**

**AREA SUPERVISOR** (B)  
**Food & Nutrition Services** (11)

**AREA SUPERVISOR** (B)  
**Special Programs Food & Nutrition Services** (+) (2)

**COORDINATOR** (C)  
**Food & Nutrition Services**

**FINANCE MANAGER** (C)  
**Food & Nutrition Services**

**PROGRAM MANAGER** (25)  
**Nutrition, Education & Training**

**PURCHASING AGENT** (25)  
**Food Service Equipment & Supplies**

**MANAGER** (C)  
**Strategic Sourcing**

**PURCHASING AGENT IV** (25)

**MANAGER** (C)  
**Construction Sourcing** **N** ✓

**PURCHASING AGENT IV** (25)  
**Construction** **A**

**MANAGER** (26) (C)  
**Operations & Procurement Compliance** ✓

**SENIOR PROCESS ANALYST** (C)  
**N**

**PROCESS ANALYST** (25)  
**Procurement & Warehouse Services** (2)

**MANAGER** (B)  
**Warehouse Services**

**COORDINATOR** (26)  
**Supplier Diversity & Outreach**

**ASSISTANT DIRECTOR** (C)  
**Transportation Support Services**

**MANAGER II** (C)  
**Transportation Terminal** (2)

**SUPERVISOR** (25)  
**Special Needs Transportation**

**ACCOUNTANT V** (27)

**MANAGER I** (B)  
**Transportation Terminal** (2)

**MANAGER I** (C)  
**Vehicle Maintenance**

**SUPERVISOR** (25)  
**Vehicle Maintenance**

**MANAGER** (C)  
**Transportation Operations**

**MANAGER** (C)  
**Centralized Routing**

**DATA ANALYST** (25)  
**Transportation**

ESMAB PAY BANDS 'C' & 'B'  
TSP PAY GRADES 25-28